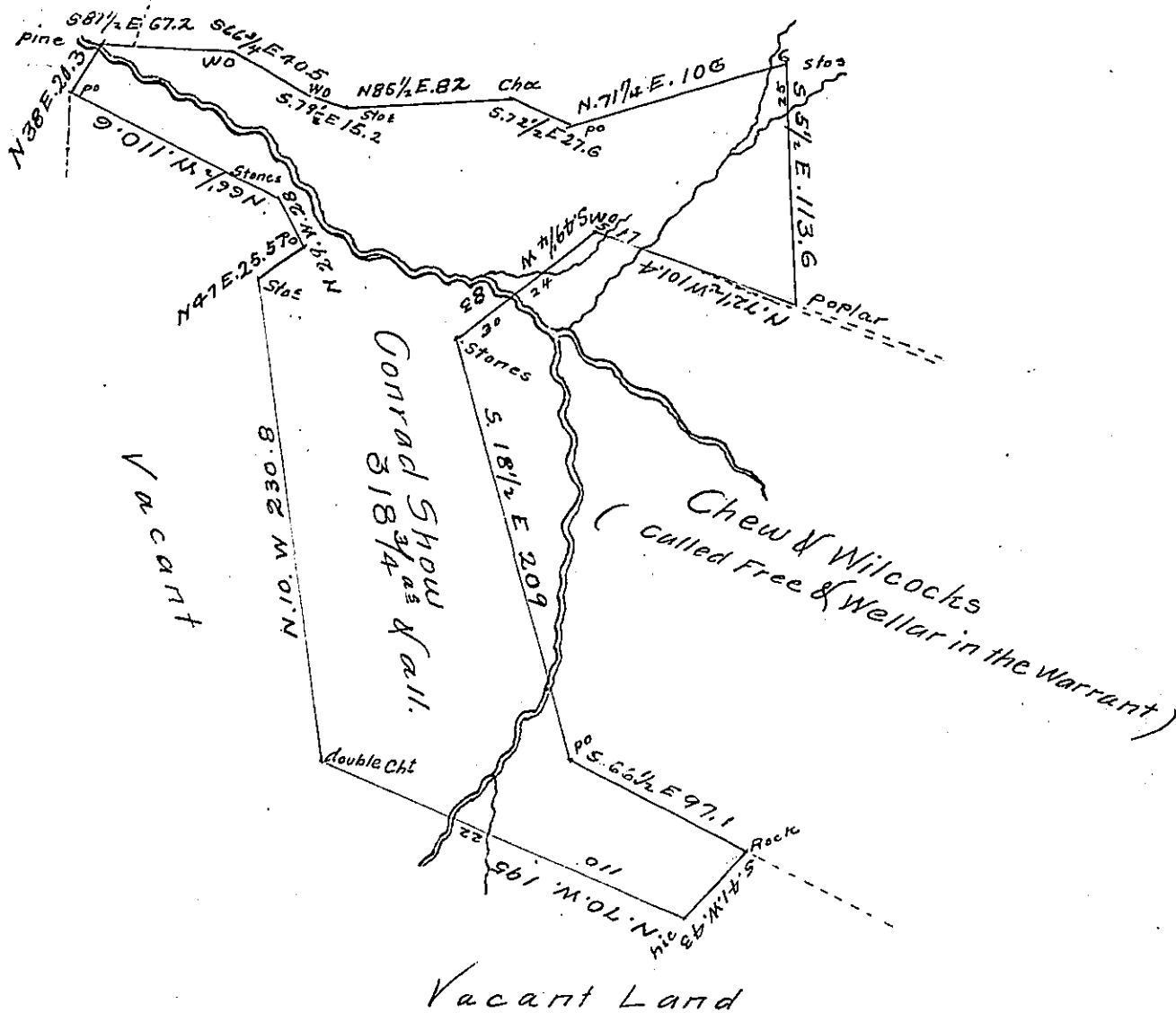


FORM No. 1.

In^o Ocelly or A Stewards claims
now Ocelly



Situate on Beaver Creek where the first location of the West-
ern or United States road crosses the same in Henry Clay
(formerly) a part of Wharton township Fayette County and Sur-
veyed the 21st day of February 1834 in pursuance of a Warrant
in the name of Conrad Show for 300 acres of Land dated
the 18th day of May 1810. There is about 20 acres in a
state of Cultivation a Cabin Stable &c. and a family
residing on this tract. Suppose to improved near 30 years
ago

F Lewis D.S.

To Jacob Spangler Esquire
Surveyor General

IN TESTIMONY that the above is a copy of the original remaining on file in
the Department of Internal Affairs of Pennsylvania, made
comformably to an Act of Assembly approved the 16th day of
February 1833, I have hereunto set my hand and caused
the Seal of said Department to be affixed at Harrisburg,
this twenty-fourth day of January 1907

Isaac P. [Signature]
Secretary of Internal Affairs.